

REPERTOIRE II™

27 Stops Ultra-Compact Two Manual Console

MADE EXCLUSIVELY
FOR AUSTRALIA

Made exclusively for Australia, the Repertoire II™ was designed for the budget-minded church and the non-traditional church organist. The Repertoire II contains all the necessary features that make playing the church organ simple for a pianist or keyboard player:

- ▶ **Bass Coupler** allows for Bass accompaniment for those not familiar with playing pedals
- ▶ **The Classic Allen Stop List** is the "signature" specification that made Allen the world's favorite organ! Tens of thousands of Allen owners worldwide know and love this legendary sound.
- ▶ **The Allen Hymn Player™** plays over 150 classic hymns with the touch of a button ... or record your own and store them on a USB memory device!

FEATURING:

- Allen DSP tone generation technology
- GENISYS™ CONTROL
- Stop-by-Stop and Note-by-Note Voicing
- Acoustic Portrait™ - Actual Sampled Acoustics
- Classic Allen Stoplist with Orchestral Voices
- Advanced MIDI capabilities
- Lumitech™ lighted stop controls with LED technology
- 32-Note compact radiating pedalboard

AVAILABLE OPTIONS:

- 32-note compact parallel pedalboard
- Full Antiphonal



Allen organs®

BUILT TO INSPIRE GENERATIONS

REPERTOIRE II™

Classic Allen is the organ's "signature" specification that made Allen the world's favorite organ!

REPERTOIRE II Exclusive Advantages:

- Allen DSP tone generation technology
- GENISYS™ CONTROL - includes Console Controller™ features plus USB interface, Hymn-Player™ (automatically plays over 150 hymns, or record and save your own), Sequencer, Additional Capture Memories, and much more!
- Acoustic Portrait™ - Actual Sampled Acoustics
- Advanced MIDI capabilities
- Lumitech™ lighted stop controls with LED technology
- USB Memory Capability



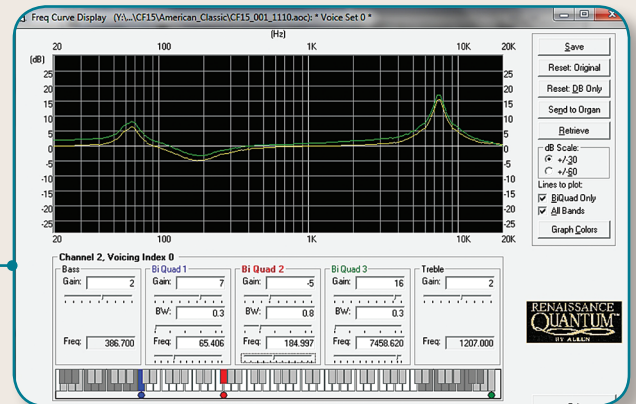
Additional REPERTOIRE II Features:

- 32-Note compact radiating pedalboard
- Headphone jack
- Medium-oak console
- Clear acrylic music rack
- Swell and Great Tremulants
- Capture Pistons: 4 Memories for capture action; 7 Generals, Set, Cancel
- Bass & Melody Coupler
- Industry standard velocity-sensitive keyboards
- 10 year limited warranty. See warranty for details.
- Audio System: Two channels, 120 watts RMS, including a 15 inch woofer
- Console Dimensions: Width 50-1/2" (128.3 cm); Height 42" (106.7 cm); w/music rack 52-1/2" (133.35 cm); Depth 23-1/8" (58.7cm) at keyboards without pedalboard, 38-3/4" (98.4 cm) with pedalboard



Comprehensive Voicing Capabilities including (optional software package):

- Stop-by-stop and note-by-note voicing
- Parametric Equalization (PEQ)
- SoundMatrix™ - Library of additional samples (Option)



REPERTOIRE II Options:

- 32-Note compact parallel pedalboard
- Full Antiphonal

REPERTOIRE II - CLASSIC ALLEN STOP LIST WITH ORCHESTRAL

PEDAL	SWELL	GREAT	GENERAL
16 BOURDON	8 GEDACKT	8 GEDACKT (SW)	BASS COUPLER
16 LIEBLICH GEDACKT (SW)	8 VIOLA POMPOSA <i>VIOLIN</i>	8 DIAPASON	MELODY COUPLER
8 OCTAVE	8 VIOLE CELESTE <i>STR. ENSEMBLE</i>	8 HARMONIC FLUTE <i>STR. ENSEMBLE</i>	GT-PD UNENCLOSED
8 FLUTE	4 OCTAVE GEIGEN <i>ORCH. FLUTE</i>	8 FLUTE CELESTE II (SW)	CONSOLE SPEAKERS OFF
4 SUPER OCTAVE	4 TRAVERSE FLUTE	4 OCTAVE	EXTERNAL SPEAKERS OFF
16 POSAUNE	2 ² / ₃ NASARD	4 SPITZFLUTE	
4 CLARION <i>STR. BASS</i>	2 PICCOLO	2 FIFTEENTH	
GREAT TO PEDAL	1 ³ / ₅ TIERCE	MIXTURE IV <i>CHOIR</i>	
SWELL TO PEDAL	FOURNITURE IV <i>CHOIR</i>	8 TRUMPET	
MIDI ON PEDAL	16 BASSON <i>CLARINET</i>	TREMULANT	
	8 OBOE <i>ENGLISH HORN</i>	SWELL TO GREAT	
	TREMULANT	MIDI ON GREAT	
	MIDI ON SWELL		



BUILT TO INSPIRE GENERATIONS

Allen Organ Company LLC
150 Locust Street, Macungie, PA 18062 USA
610-966-2202 • aosales@allenorgan.com • www.allenorgan.com

*Red indicates Orchestral Voices
Specifications and stop lists subject to change without notice or obligation.*

ACT, NSW, Qld - Jim 0412-758-651
Sydney metro - Godelieve 0404-837-363
www.allorgans.com.au